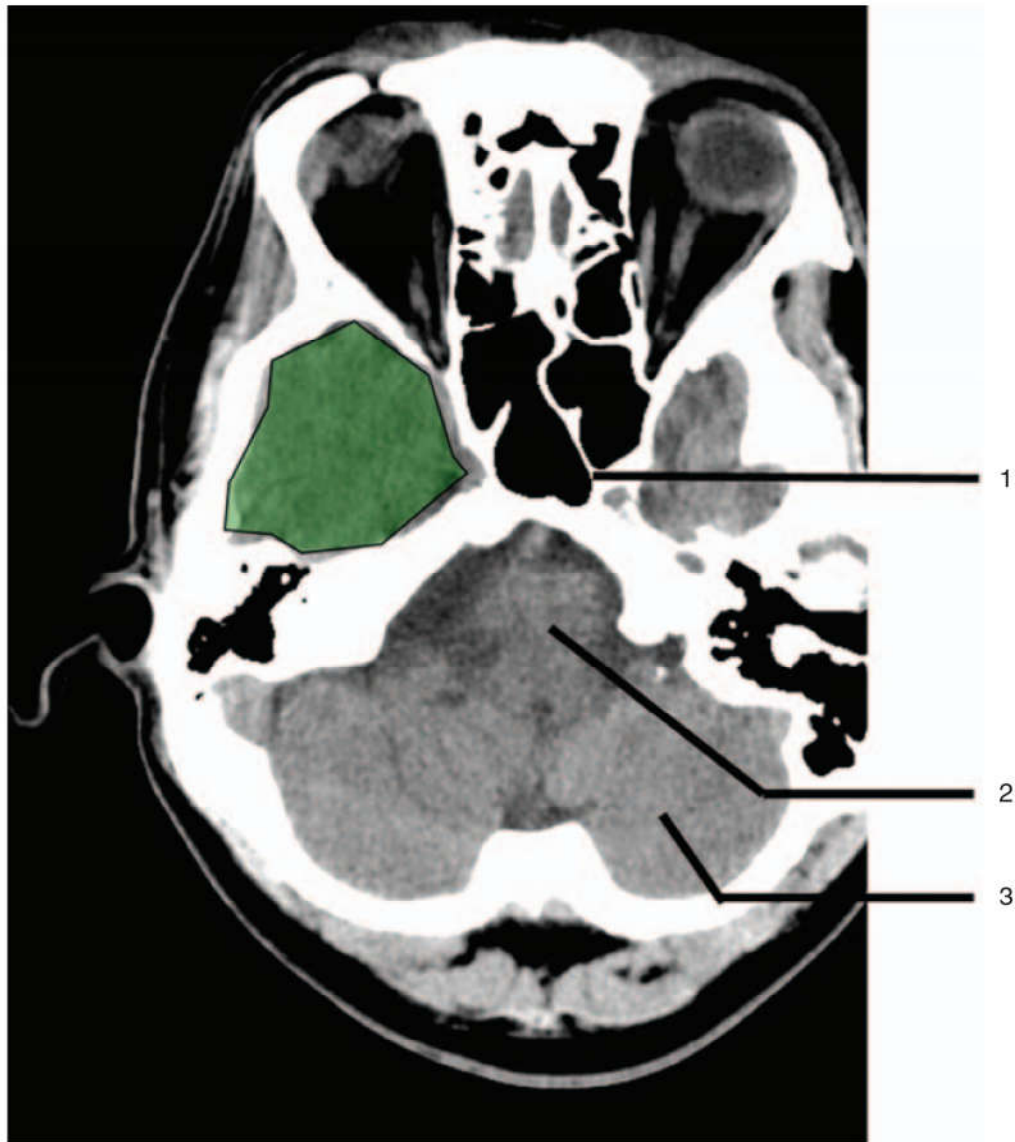


Important anatomical considerations

Review of normal anatomy

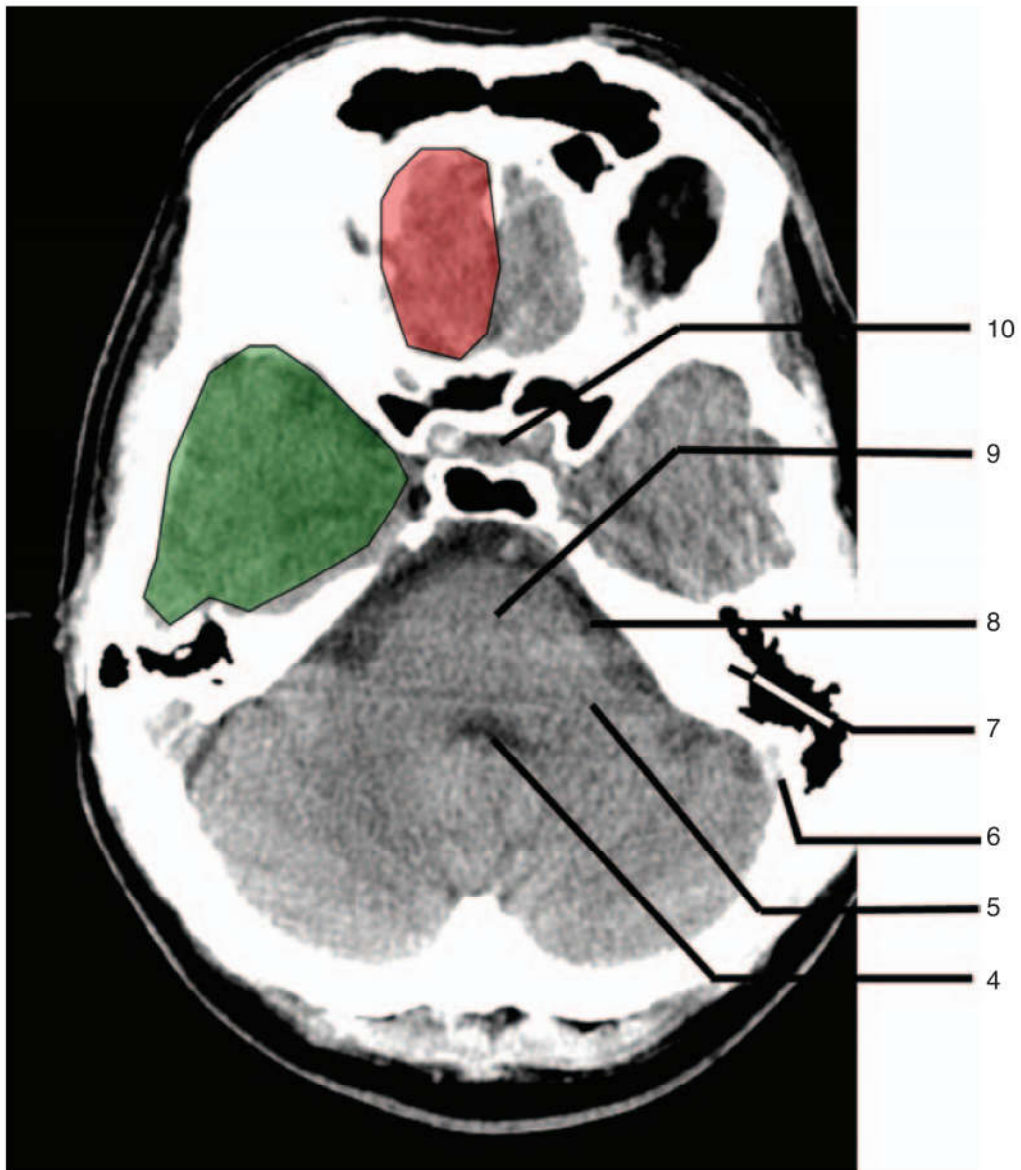
Key for cerebral anatomy

- 1 = Sphenoid sinus
- 2 = Medulla oblongata
- 3 = cerebellum



 Temporal Lobe

- 4 = Fourth ventricle
- 5 = Middle cerebellar peduncle
- 6 = Sigmoid sinus
- 7 = Petrous temporal bone and mastoid air cells
- 8 = Cerebellopontine angle
- 9 = Pons
- 10 = Pituitary fossa



Frontal Lobe

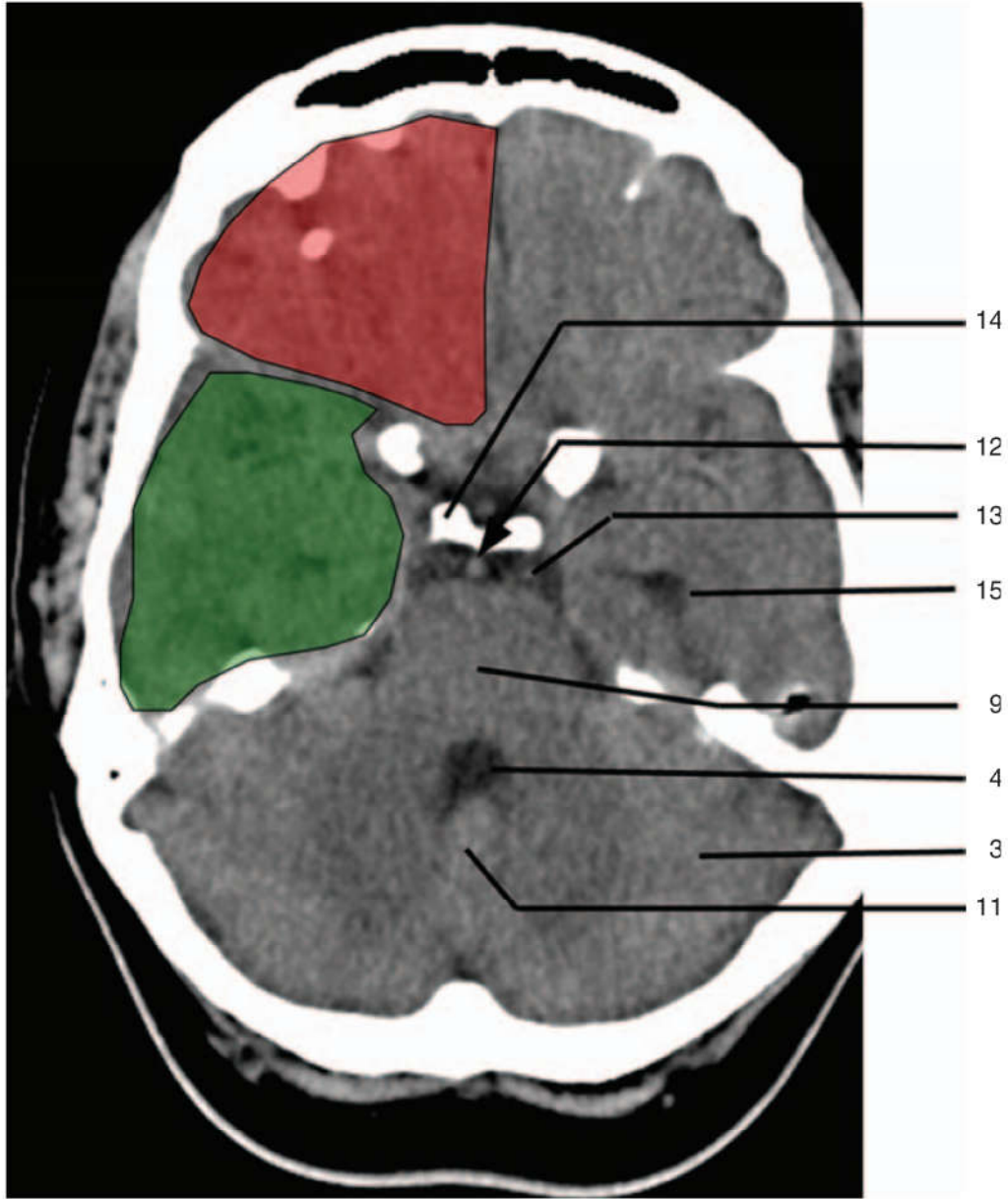


Temporal Lobe

Important anatomical considerations



- 11 = Cerebellar vermis
- 12 = Basilar artery
- 13 = Prepontine cistern
- 14 = Dorsum sellae
- 15 = Temporal horn of lateral ventricle

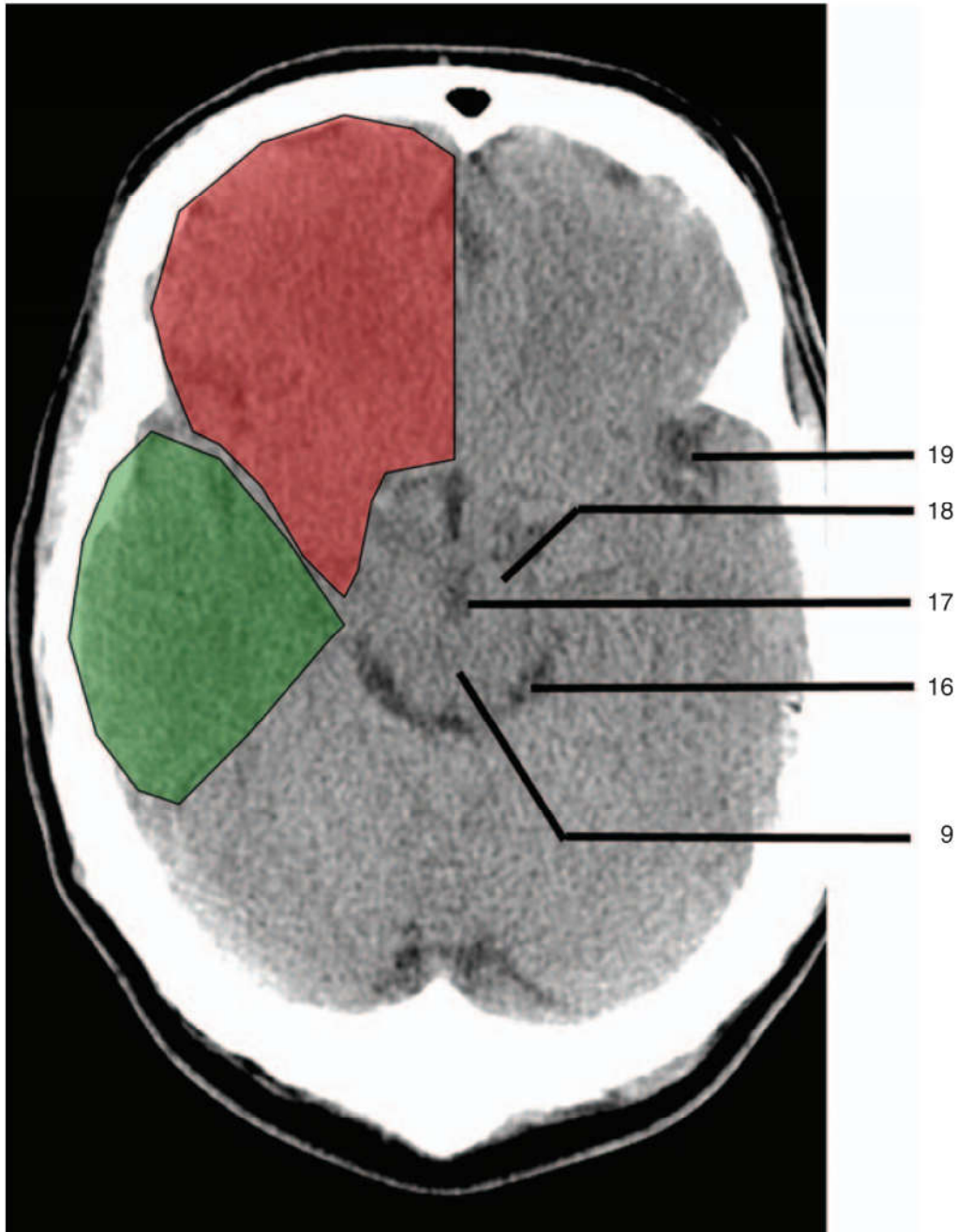


Frontal Lobe



Temporal Lobe

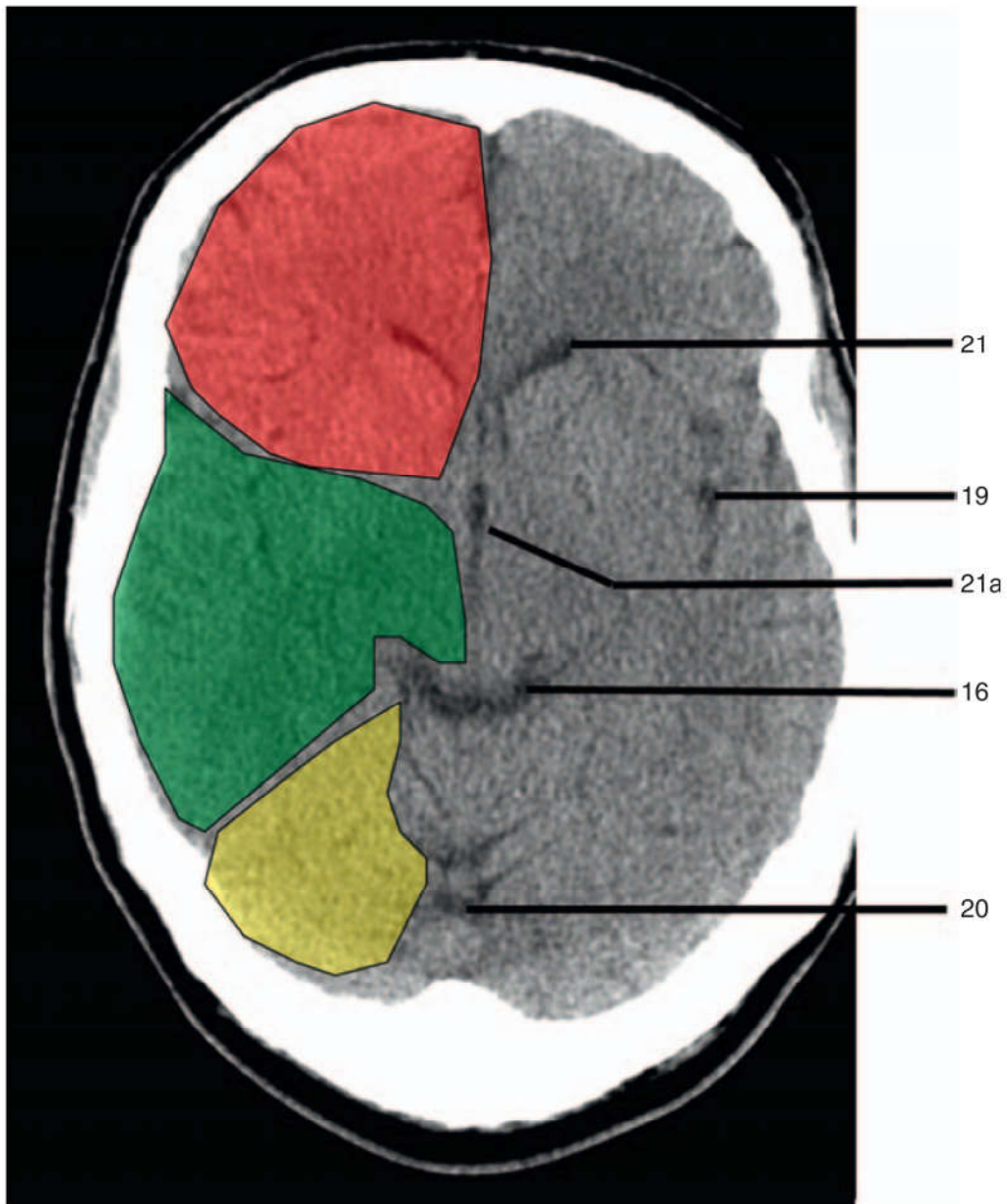
- 16 = Ambient cistern
- 17 = Interpeduncular cistern
- 18 = Cerebral peduncle
- 19 = Sylvian fissure



Frontal Lobe
 Temporal Lobe

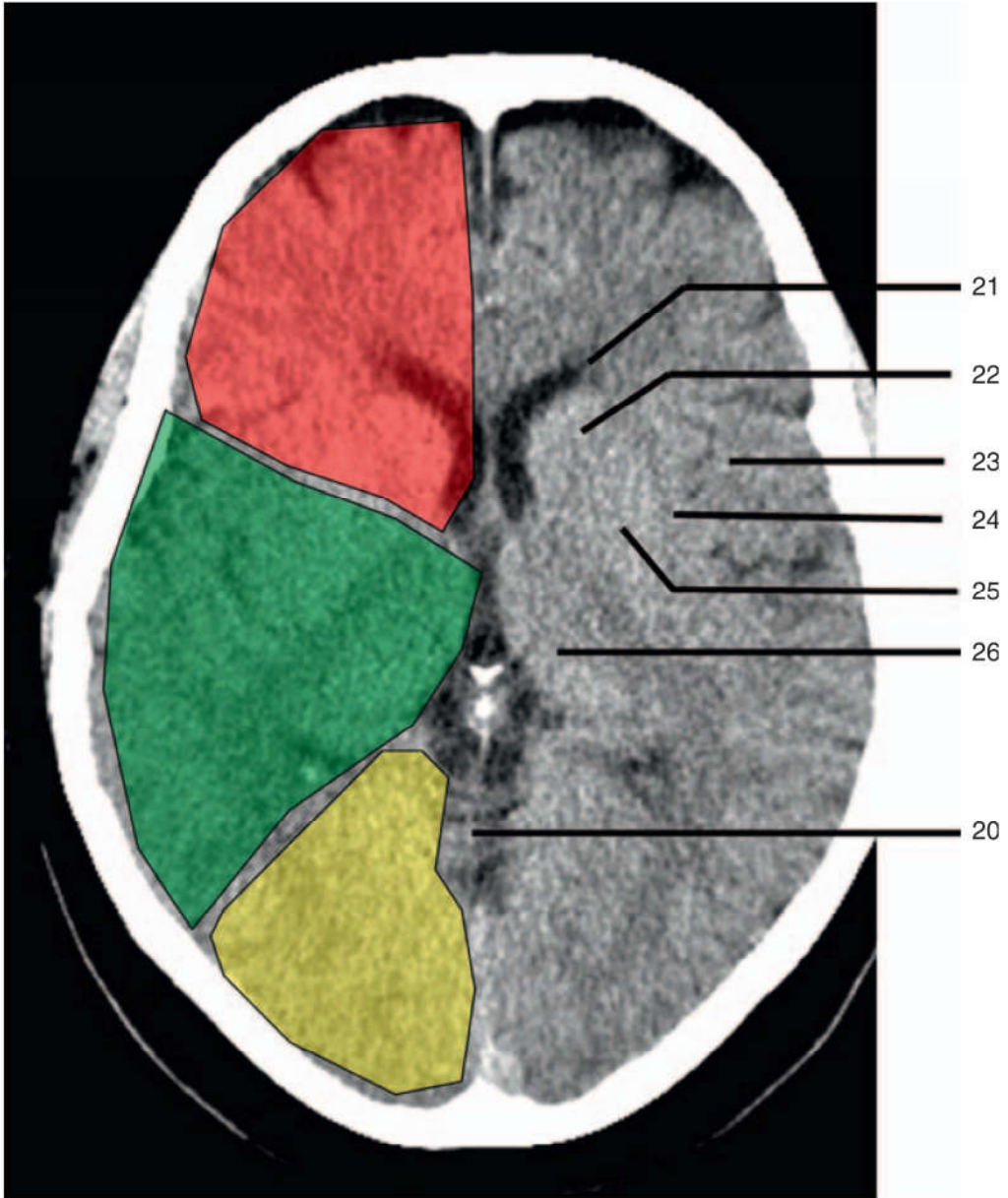


- 20 = Supra vermian cistern
- 21 = Frontal horn of lateral ventricle
- 21a = Third ventricle



- Frontal Lobe
- Occipital Lobe
- Temporal Lobe

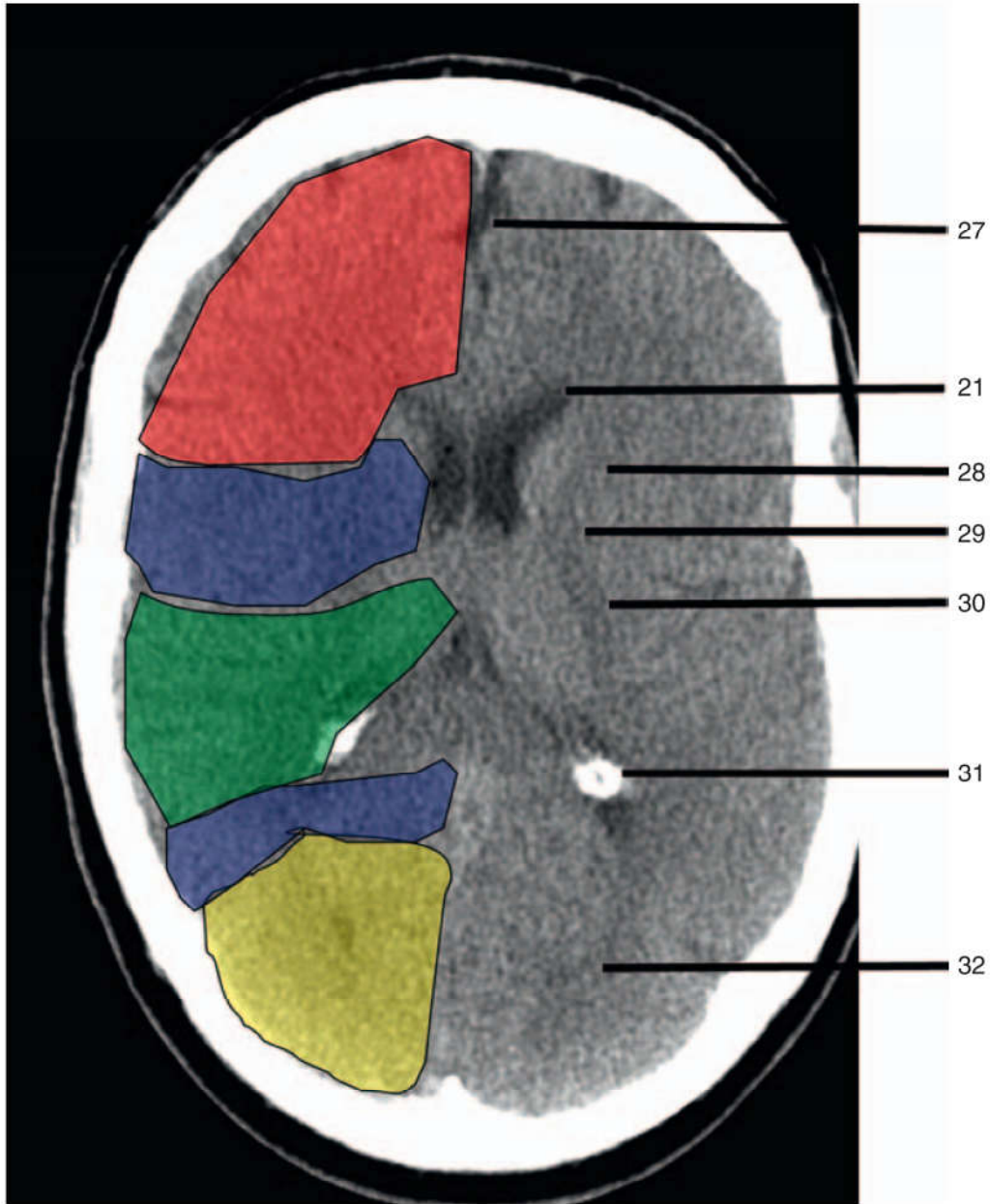
- 22 = Head of caudate nucleus
- 23 = Insular cortex
- 24 = External capsule
- 25 = Lentiform nucleus
- 26 = Thalamus



- Frontal Lobe
- Occipital Lobe
- Temporal Lobe

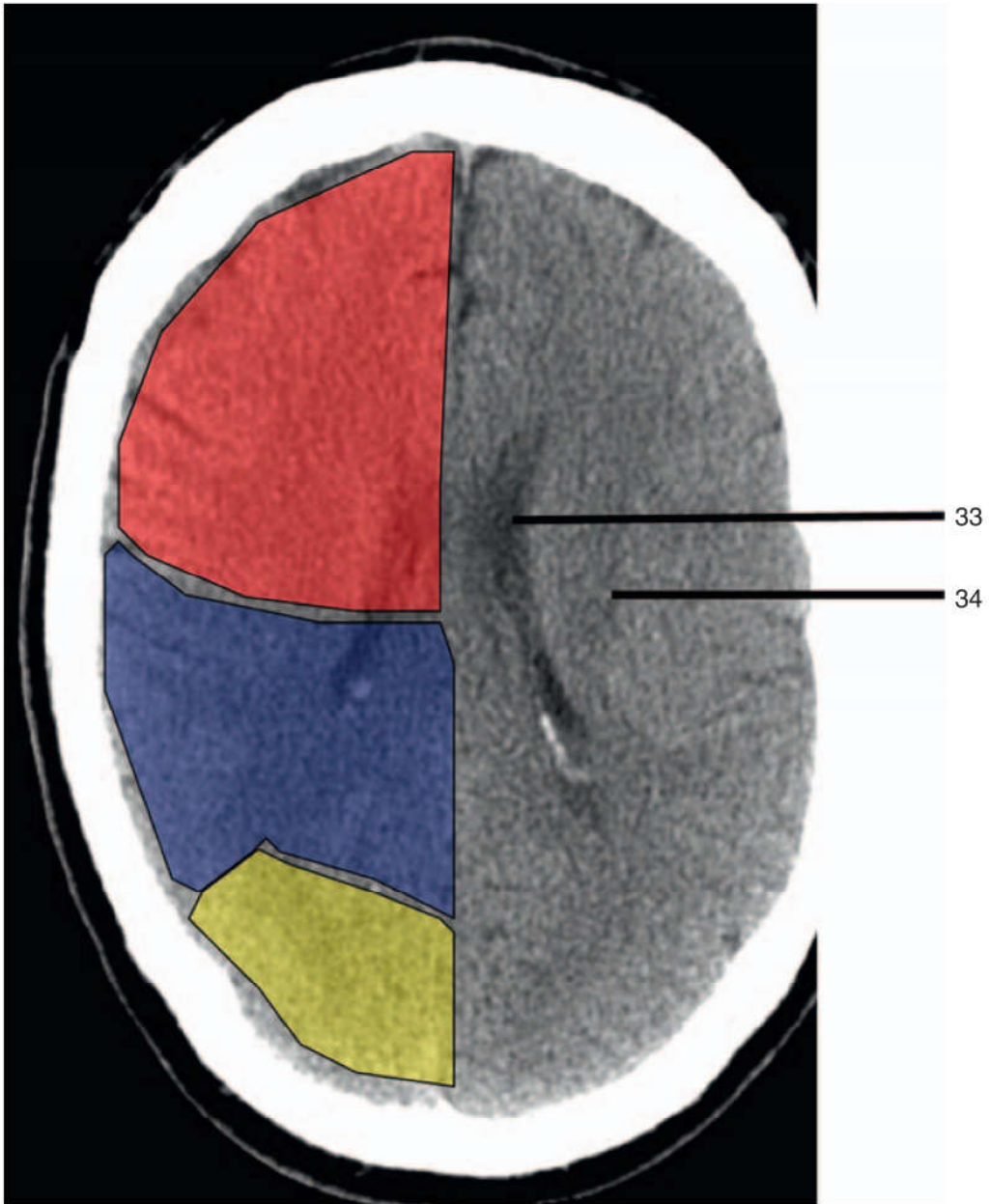


- 27 = Interhemispheric fissure
- 28 = Anterior limb of internal capsule
- 29 = Genu of internal capsule
- 30 = Posterior limb of internal capsule
- 31 = Trigone of lateral ventricle and calcified choroid plexus
- 32 = Occipital horn of lateral ventricle



- | | | | |
|---|---------------|---|----------------|
|  | Frontal Lobe |  | Occipital Lobe |
|  | Temporal Lobe |  | Parietal Lobe |

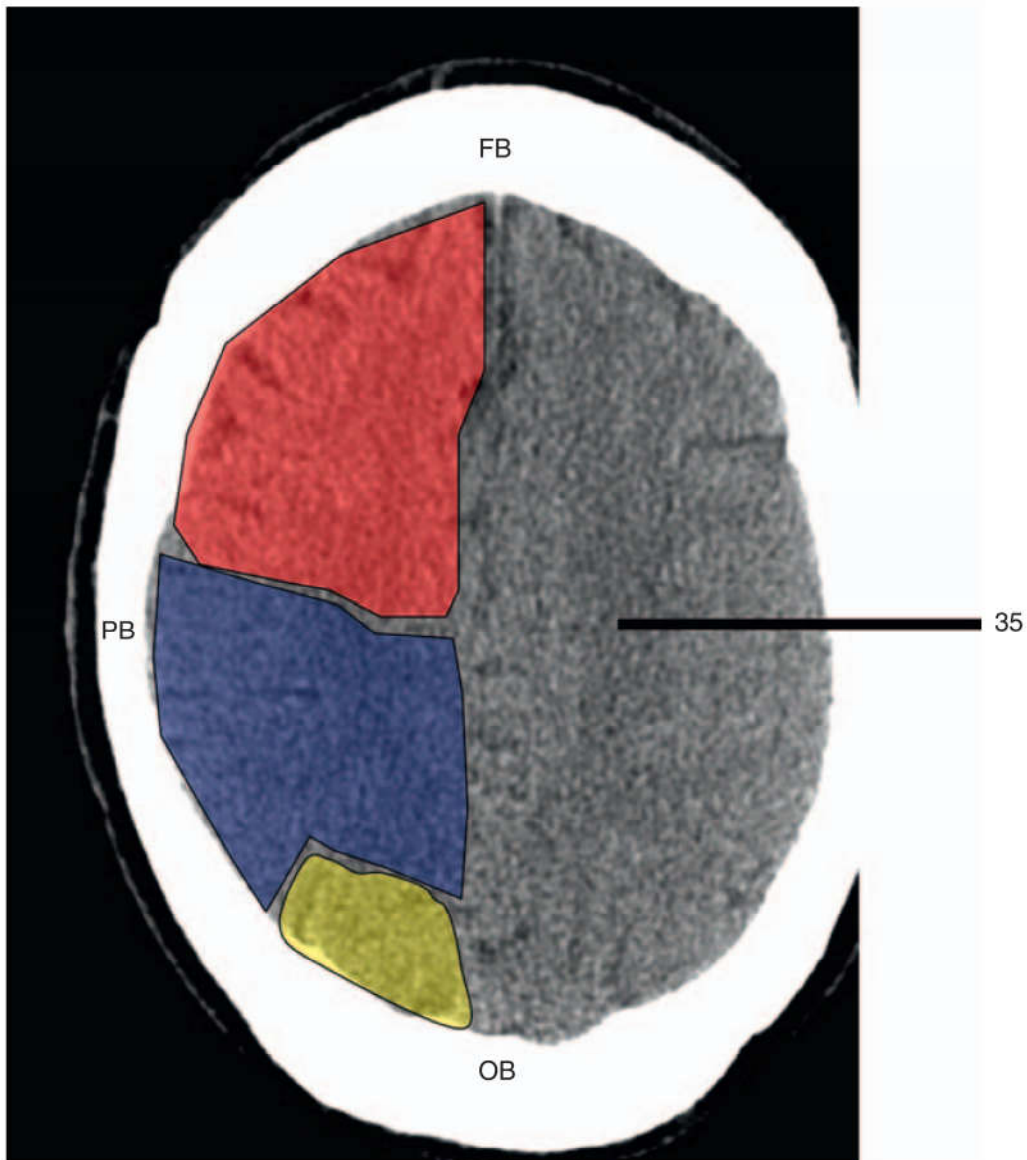
- 33 = Body of lateral ventricle
- 34 = Corona radiata



-  Frontal Lobe
-  Parietal Lobe
-  Temporal Lobe

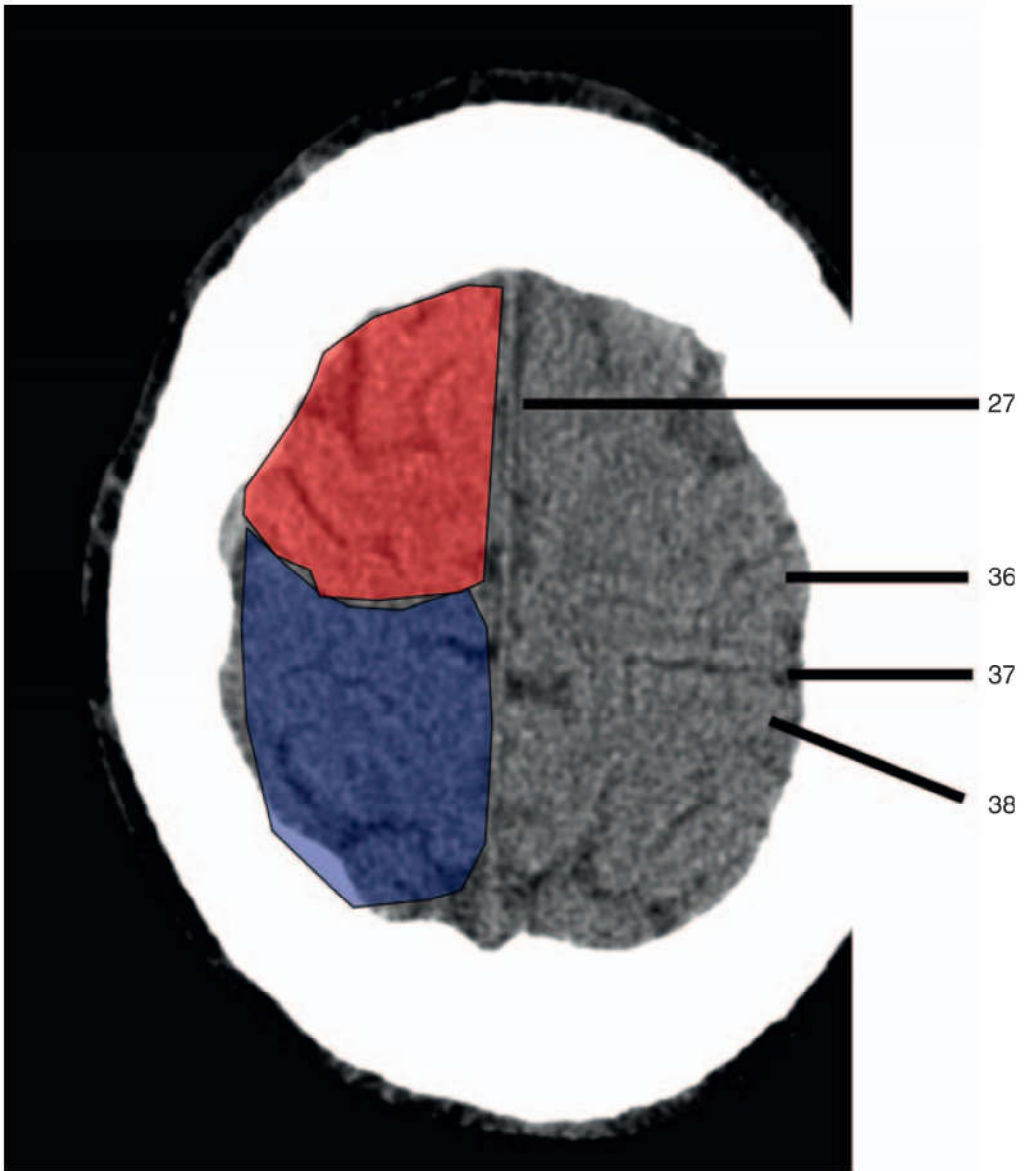
Important anatomical considerations

35 = Centrum semiovale
FB = Frontal bone
PB = Parietal bone
OB = Occipital bone



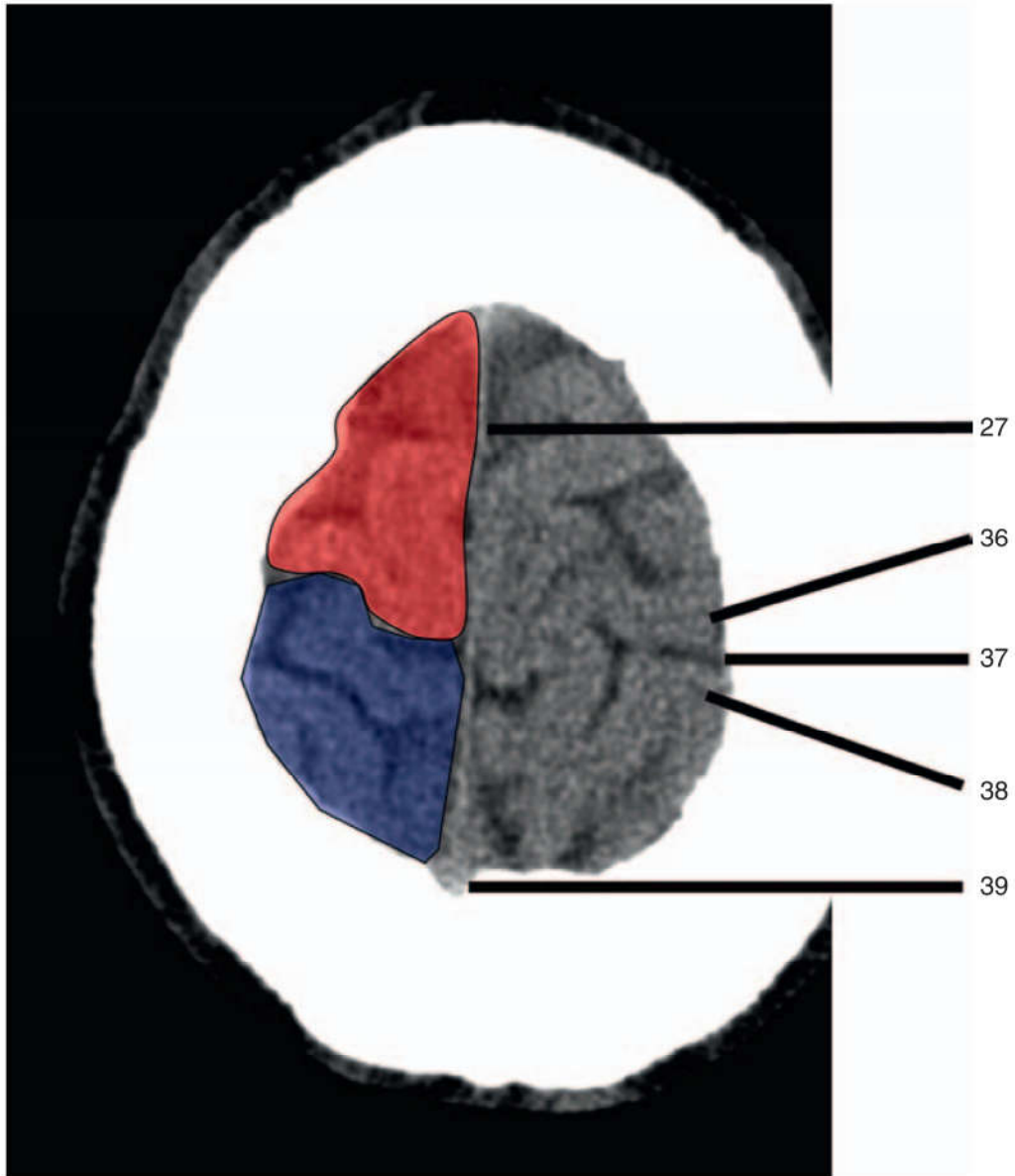
	Frontal Lobe		Temporal Lobe
	Parietal Lobe		

- 36 = Pre-central gyrus
- 37 = Central sulcus
- 38 = Post-central gyrus



 Frontal Lobe  Parietal Lobe

39 = Superior sagittal sinus.



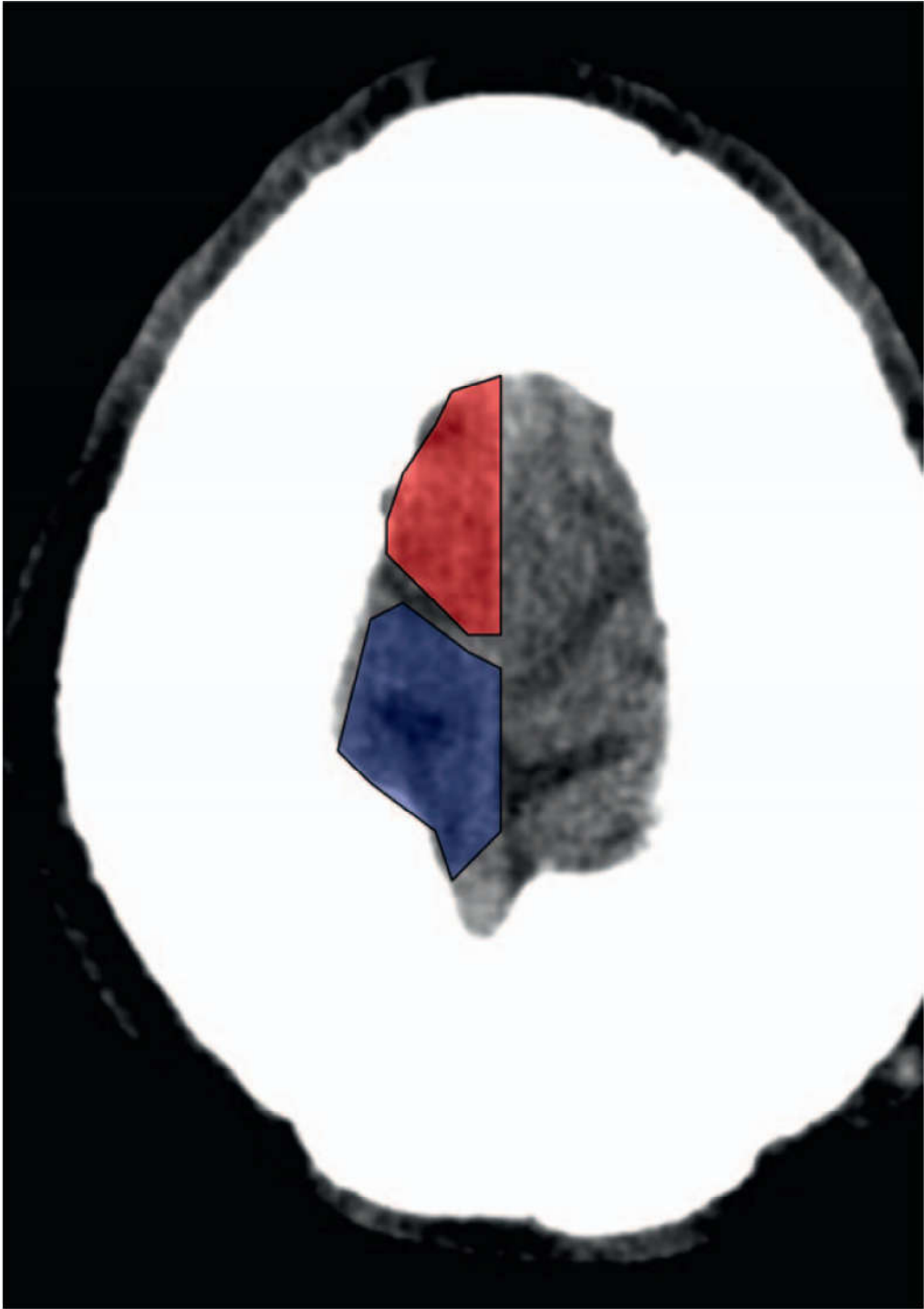
Frontal Lobe



Parietal Lobe



Important anatomical considerations



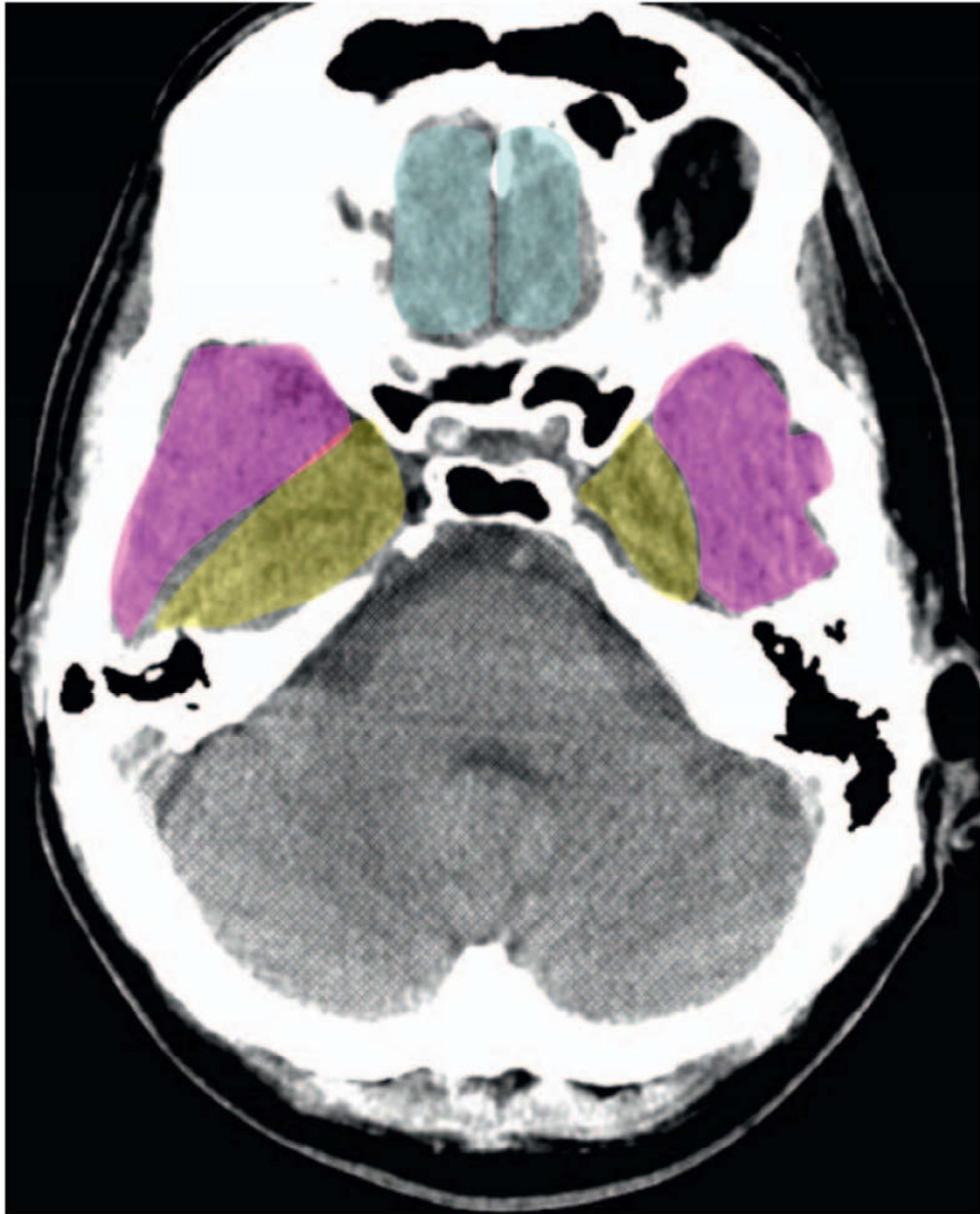
Frontal Lobe



Parietal Lobe

Review of vascular territories

Interpretation of Emergency Head CT



Terminal branches of the anterior cerebral artery







Terminal branches of the middle cerebral artery









Terminal branches of the posterior cerebral artery










-  Terminal branches of the anterior cerebral artery
-  Terminal branches of the middle cerebral artery
-  Anterior choroidal artery
-  Terminal branches of the posterior cerebral artery









-  Terminal branches of the anterior cerebral artery
-  Terminal branches of the middle cerebral artery
-  Anterior choroidal artery
-  Terminal branches of the posterior cerebral artery
-  Penetrating branches of the anterior cerebral artery
-  Penetrating branches of the posterior cerebral artery and posterior communicating artery








-  Penetrating branches of the middle cerebral artery
-  Terminal branches of the anterior cerebral artery
-  Terminal branches of the middle cerebral artery
-  Anterior choroidal artery
-  Terminal branches of the posterior cerebral artery
-  Penetrating branches of the anterior cerebral artery
-  Penetrating branches of the posterior cerebral artery and posterior communicating artery






-  Penetrating branches of the middle cerebral artery
-  Terminal branches of the anterior cerebral artery
-  Terminal branches of the middle cerebral artery
-  Terminal branches of the posterior cerebral artery
-  Penetrating branches of the posterior cerebral artery and posterior communicating artery
-  Anterior choroidal artery






-  Penetrating branches of the middle cerebral artery
-  Terminal branches of the anterior cerebral artery
-  Terminal branches of the middle cerebral artery
-  Terminal branches of the posterior cerebral artery
-  Penetrating branches of the posterior cerebral artery and posterior communicating artery



-  Terminal branches of the anterior cerebral artery
-  Terminal branches of the middle cerebral artery
-  Terminal branches of the posterior cerebral artery



-  Terminal branches of the anterior cerebral artery
-  Terminal branches of the middle cerebral artery
-  Terminal branches of the posterior cerebral artery



Terminal branches of the anterior cerebral artery



Terminal branches of the middle cerebral artery



Terminal branches of the posterior cerebral artery



Terminal branches of the anterior cerebral artery



Terminal branches of the middle cerebral artery



Terminal branches of the anterior cerebral artery